

SUBBOTTOM PROFILING

YOUR EYES BELOW THE SURFACE

Subbottom profilers provide information about sediment composition beneath the seafloor but can also be used for object detection like pipelines, boulders or UXO.

APPLICATIONS

- Pre-site surveys
- Geological investigation
- Building ground investigation
- Object identification
(UXO, buried cables, pipelines, erratic boulders, ...)



KAMPFMITTELBERGUNG

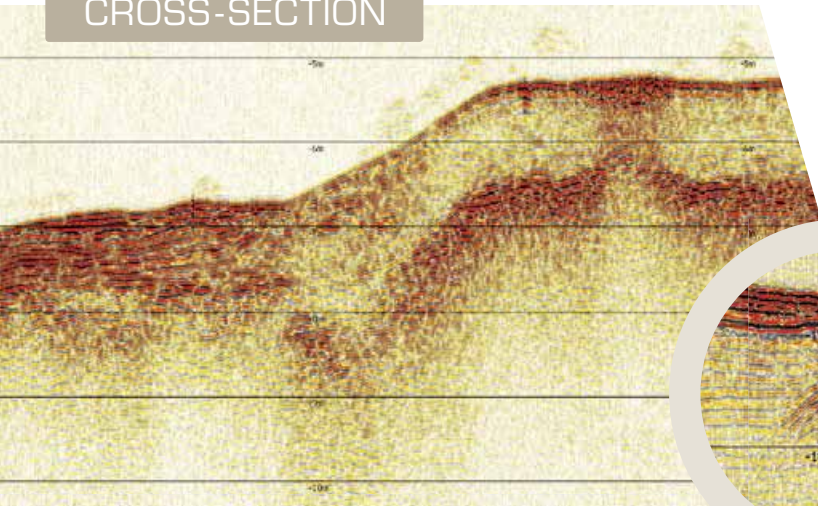
- ☎ Telefon: +49 (0)4109 2799-156
 ✉ info@eggers-kampfmittelbergung.de
 🌐 www.eggers-kampfmittelbergung.de



KAMPFMITTELBERGUNG

SUBBOTTOM PROFILER

CROSS-SECTION



Buried objects can be evident as hyperbolas within layered sediments. Correlation with further datasets from magnetic surveys provides more precise analysis of detected objects.

Based on reflections of transmitted acoustic waves, subbottom profilers generate a two-dimensional section of seafloor sediments.

Geological layers can be identified and sediment thickness (as well as volumes) can be calculated. Those measurements are integrated into the expected burial depth of the UXO.

High resolution subbottom profilers also allow detection of objects within the sediments. With a dense grid of survey lines acoustic methods can be used for detection of obstacles like boulders and buried cables as well as UXOs.

INFO

- From extreme shallow to medium water depths including rivers, lakes, coastal areas as well as offshore applications
- High resolution layer detection
- Georeferenced 2D-profiles

